

MEDEA • CAVALLERIA RUSTICANA & PAGLIACCI •

SAFRONIA • RENÉE FLEMING IN RECITAL: VOICE OF NATURE • LYRIC OPENING CONCERT & GALA •



# The 2025 | 26 Season

**John Mangum**  
General Director, President & CEO

**Enrique Mazzola**  
Music Director

SALOME • COSÌ FAN TUTTE • MADAMA BUTTERFLY • EL ÚLTIMO SUEÑO DE FRIDA Y DIEGO • CARMINA BURANA •

A NIGHT OF MELLON COLLIE AND INFINITE SADNESS •



# Join us at Lyric and immerse yourself in stories you'll never forget.

We love opera for telling stories on the grandest scale imaginable, stories that get to the heart of the human experience. We love opera because we see ourselves reflected in it, our loves, our laughs, our passions, and our sorrows.

The elation of first love.  
The comedy of being human.  
The passionate sting of jealousy.  
The heartbreak of loss.

Opera's stories uplift us, transport us, and remind us what it is to be alive. Whether we are taking in a timeless story set in a faraway land or experiencing a new work that captures a moment from the present day, opera's stories are universal, and they speak directly to us on a deep and profound level.

Lyric is home to a community of artists and arts lovers who cherish these shared experiences, conveyed and amplified by some of the greatest music ever created. Live performances are at the heart of what we do, and there simply is no substitute for letting opera overwhelm you in the theater, in person, as we sit together in the dark and share one of the most thrilling experiences humankind has ever devised.

So bring your curiosity and your passion for opera,  
and join us for a new season at Lyric.



***John Mangum***

General Director,  
President & CEO

***Enrique Mazzola***

Music Director





*Cherubini*

# Medea

**October  
11 - 26, 2025**

Hell hath no fury  
like a sorceress  
scorned.

***Lyric premiere and new coproduction***

*Sung in Italian with projected English titles*

Euripides’s millennia-old tragedy of infidelity and revenge comes to life — and gruesome death — in this presentation of acclaimed director Sir David McVicar’s iconic, grand-scale production.

Featuring Lyric’s own Music Director Enrique Mazzola on the podium, this intense spectacle stars international powerhouse soprano Sondra Radvanovsky in one of the fiercest, most demanding roles ever written. She shares the stage with equally formidable tenor — and Lyric favorite — Matthew Polenzani.

*Medea* dials the drama up to 11, bringing new meaning to “blood and thunder” as it tantalizes hardcore opera lovers and leaves new audiences glued to the edge of their seats.

**Conductor**  
Enrique Mazzola

**Director & Set Designer**  
Sir David McVicar

**Costume Designer**  
Doey Lüthi\*

**Lighting Designer**  
Paule Constable

**Projection Designer**  
S. Katy Tucker

**Chorus Director**  
Michael Black

**Movement Director**  
Jo Meredith\*

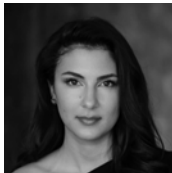
\* Lyric Opera of Chicago debut  
\*\* Ryan Opera Center alumnus



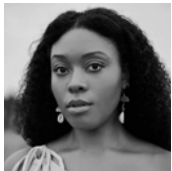
**Medea**  
Sondra  
Radvanovsky



**Giasone**  
Matthew  
Polenzani\*\*



**Glauce**  
Elena  
Villalón\*



**Neris**  
Zoie Reams



**Creonte**  
Alfred Walker

Lyric’s presentation of Cherubini’s *Medea* is generously made possible by **Lisbeth Stiffel, Julie & Roger Baskes, and Mariys A. Beider**.  
Maestro Enrique Mazzola is generously sponsored by **Alice & John Butler, H. Gael Neeson, Sylvia Neil & Daniel Fischel, the Robert and Penelope Steiner Family Foundation, Mary Stowell, and the Zell Family Foundation** as members of the Enrique Circle.  
A coproduction of Lyric Opera of Chicago, the Metropolitan Opera, Greek National Opera, and Canadian Opera Company.





*Mascagni / Leoncavallo*

# Cavalleria rusticana & Pagliacci

**November  
1 - 23, 2025**

Opera's most thrilling  
double bill returns after  
more than 15 years.

*Sung in Italian with projected English titles*

This duo of passionate one-act operas explores the depths of spurned lovers' grief and the lengths they'll go to in avenging betrayal. Deadly love triangles unfold against starkly contrasted backdrops of an idyllic Sicilian countryside and a chaotic urban center.

Music Director Enrique Mazzola leads a world-class cast that includes Lyric favorites Russell Thomas, Quinn Kelsey, and Gabriella Reyes in Elijah Moshinsky's production.

With two shorter operas in a single performance, this is a perfect sampler for new operagoers. More seasoned audiences know it's a delicious opportunity to revisit these tragic classics.

**Conductor**  
Enrique Mazzola

**Original Director**  
Elijah Moshinsky

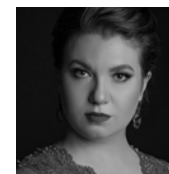
**Revival Director**  
Peter McClintock

**Set & Costume Designer**  
Michael Yeagan

**Lighting Designer**  
Duane Schuler

**Chorus Director**  
Michael Black

\* Lyric Opera of Chicago debut  
\*\* Ryan Opera Center alumnus



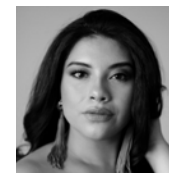
**Santuzza**  
Yulia  
Matochkina\*



**Turiddu**  
SeokJong  
Baek\*



**Alfio & Tonio**  
Quinn  
Kelsey\*\*



**Nedda**  
Gabriella Reyes



**Canio**  
Russell Thomas



**Silvio**  
Luke Sutliff\*

Lyric's presentation of Mascagni's *Cavalleria rusticana* and Leoncavallo's *Pagliacci* are generously sponsored by **Josef & Margo Lakonishok** and **Sonia Florian**.  
Maestro Enrique Mazzola is generously sponsored by **Alice & John Butler, H. Gael Neeson, Sylvia Nelli & Daniel Fischel**,  
the **Robert and Penelope Steiner Family Foundation, Mary Stowell**, and the **Zell Family Foundation** as members of the Enrique Circle.





*Richard Strauss*

# Salome

**January 25 -  
February 14, 2026**

Every obsession  
has consequences.  
Sometimes they're deadly.

***New-to-Chicago production***

*Sung in German with projected English titles*

Based on Oscar Wilde's one-act play, *Salome* has been thrilling and fascinating audiences for more than a century. Lyric brings Sir David McVicar's decadent production — which is set in 1940s fascist Italy and sheds a harsh light on the timeless greed and entitlement of the elite — to Chicago.

This gory thrill ride returns to Lyric for the first time in 20 years starring Elena Stikhina in the demanding title role of a teenage femme fatale whose infatuation has fatal implications, alongside Lyric favorites Brandon Jovanovich and Tanja Ariane Baumgartner.

*Salome* drips with decadence that matches Strauss's lyrical score and German libretto. From the infamous "Dance of the Seven Veils" to Salome's shocking last kiss, this production will leave you breathless.

**Conductor**  
Tomáš Netopil\*

**Original Director**  
Sir David McVicar

**Revival Director**  
Julia Burbach\*

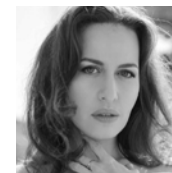
**Designer**  
Es Devlin\*

**Original Lighting Designer**  
Wolfgang Göbbel

**Video Designer**  
59 Productions\*

**Original Choreographer**  
Andrew George

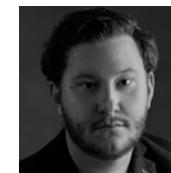
**Revival Choreographer**  
Emily Piercy\*



**Salome**  
Elena  
Stikhina\*



**Herod**  
Brandon  
Jovanovich



**Jochanaan**  
Nicholas  
Brownlee\*



**Herodias**  
Tanja Ariane  
Baumgartner



**Narraboth**  
Ryan Capozzo\*\*

\* Lyric Opera of Chicago debut  
\*\* Ryan Opera Center alumnus

Production by the Royal Ballet and Opera, first seen at the Royal Opera House, London on February 21, 2008.



Mozart

# Così fan tutte

**February  
1 - 15, 2026**

A rom-com battle of the sexes, just in time for Valentine's Day.

***New-to-Chicago production***

*Sung in Italian with projected English titles*

Two officers, convinced all women are fickle in love, hatch a plan to switch places and woo each other's fiancées in disguise — but the women know exactly what they're up to from the start.

Hilarity and dazzling arias ensue in a 1930s-era seaside country club, where frothy costumes and splashy sets belie an undercurrent of distrust and deception on par with a binge-worthy reality show.

Conducted by Enrique Mazzola and featuring a fresh ensemble of star artists alongside Grammy honorees Ana María Martínez and Rod Gilfry, *Così* sets off vocal pyrotechnics that bubble and burst with athleticism.

**Conductor**  
Enrique Mazzola

**Original Director**  
Michael Cavanagh\*

**Revival Director**  
Roy Rallo

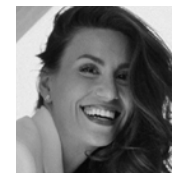
**Set Designer**  
Erhard Rom\*

**Costume Designer**  
Constance Hoffman

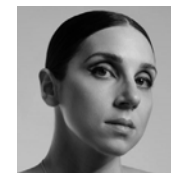
**Lighting Designer**  
Jane Cox\*

**Chorus Director**  
Michael Black

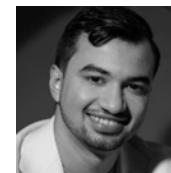
\* Lyric Opera of Chicago debut  
\*\* Ryan Opera Center alumnus



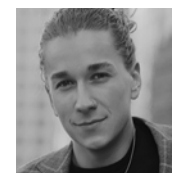
**Fiordiligi**  
Jacquelyn Stucker\*



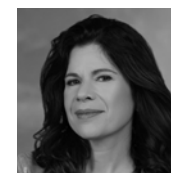
**Dorabella**  
Cecilia Molinari\*



**Ferrando**  
Anthony León\*



**Guglielmo**  
Ian Rucker\*\*



**Despina**  
Ana María Martínez



**Don Alfonso**  
Rod Gilfry

Lyric's presentation of Mozart's *Così fan tutte* is generously made possible by **The Negaunee Foundation** and **Randy L. & Melvin R.\* Berlin**. \*deceased

Maestro Enrique Mazzola is generously sponsored by **Alice & John Butler, H. Gael Neeson, Sylvia Neil & Daniel Fischel**, the **Robert and Penelope Steiner Family Foundation, Mary Stowell**, and the **Zell Family Foundation** as members of the Enrique Circle.

A San Francisco Opera production. Scenery construction and painting by the San Francisco Opera Scene Shop. Costumes fabricated by the San Francisco Opera Costume Shop.





*Puccini*

# Madama Butterfly

**March 14 -  
April 12, 2026**

A timeless tragedy — in  
dazzling contemporary  
technicolor.

***New-to-Chicago production***

*Sung in Italian with projected English titles*

Meet Cio-Cio-San — known as Madama Butterfly — a faithful but doomed geisha in love with B.F. Pinkerton. Everyone but Butterfly knows the Navy lieutenant will break her heart and ruin her life.

Opera newcomers will be swept away by the familiar melodies, gorgeous costuming, and colorful sets — and seasoned opera fans will thrill at this beautiful, thoughtful production from Lyric's own Matthew Ozawa that brings new dimension to an age-old story.

Conducted by Domingo Hindoyan and starring Karah Son, one of the leading interpreters of Butterfly in our time, Puccini's soaring and often heartbreaking melodies unite with captivating stagecraft for a singular experience.

**Conductor**

Domingo Hindoyan

**Director**

Matthew Ozawa

**Set Designer**

dots\*

**Costume Designer**

Maiko Matsushima\*

**Lighting Designer**

Yuki Nakase Link

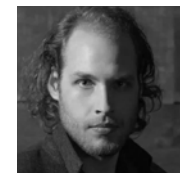
**Chorus Director**

Michael Black

\* Lyric Opera of Chicago debut



**Cio-Cio-San**  
Karah Son\*



**Pinkerton**  
Evan LeRoy  
Johnson\*



**Suzuki**  
Nozomi Kato\*



**Sharpless**  
Zachary Nelson

Lyric's presentation of Puccini's *Madama Butterfly* is generously made possible by **Lisbeth Stiffel** and **Randy L. & Melvin R.\* Berlin**. \*deceased  
A coproduction of Cincinnati Opera, Detroit Opera, Utah Opera, and Pittsburgh Opera. Scenery constructed by Cincinnati Opera.  
Costumes constructed by Cincinnati Opera, Costume Works, Inc. and Utah Opera.



Gabriela Lena Frank & Nilo Cruz

# El último sueño de Frida y Diego

**March 21 -  
April 4, 2026**

How would you spend  
a single day reunited  
with lost love?

**Lyric premiere**

*Sung in Spanish with projected English titles*

On the Day of the Dead, Mexican artist Frida Kahlo crosses over from the underworld for 24 short hours with Diego Rivera, who remains in the living world, alone and grieving her loss.

*El último sueño*, which had its critically acclaimed world premiere in 2022, brings the legendary marriage — and revolutionary art — of Frida and Diego to the stage with vivid colors, surrealist touches, and lush, evocative music sung in Spanish and inspired by Mexican folk music traditions.

Director Lorena Maza and conductor Roberto Kalb invite audiences to join in the couple's dreamlike journey through their memories of love, passion, and everything they created together.

**Conductor**  
Roberto Kalb\*

**Director**  
Lorena Maza\*

**Set Designer**  
Jorge Ballina\*

**Costume Designer**  
Eloise Kazan\*

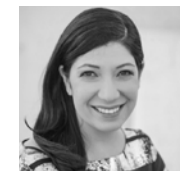
**Lighting Designer**  
Victor Zapatero\*

**Chorus Director**  
Michael Black

\* Lyric Opera of Chicago debut



**Frida**  
Daniela  
Mack



**Frida (April 1)**  
Stephanie  
Sanchez



**Catrina**  
Ana María  
Martínez



**Diego**  
Alfredo Daza\*



**Leonardo**  
Key'mon W.  
Murrah\*

Lyric's presentation of Gabriela Lena Frank and Nilo Cruz's *El último sueño de Frida y Diego* is generously made possible by the **Zell Family Foundation** and **Pritzker Foundation**.  
A coproduction of San Diego Opera and San Francisco Opera. Scenery constructed at San Diego Opera Scenic Studio. Costumes constructed at San Diego Opera Costume Shop.





Orff

# Carmina Burana

**November  
14, 16 & 18, 2025**

You've heard "O Fortuna"  
a thousand times — now  
experience the thrill of this  
complete work at Lyric.

*Sung in the original languages with projected English titles*

For three performances only, Enrique Mazzola leads the celebrated Lyric Opera Orchestra and Chorus in *Carmina Burana*, the sweeping cantata based on 24 medieval poems. Lyric's talented artists bring this masterpiece to life in all its visceral dimension, from sotto voce choral staccatos to bombastic crashes of brass.

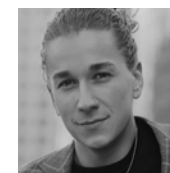
As the music envelops you, contemplate the whims of fickle fortune — or simply enjoy an extended spooky season with its lush, melancholy, and oh-so-familiar strains.



**Soprano**  
Jasmine  
Habersham



**Tenor**  
David  
Portillo\*\*



**Baritone**  
Ian  
Rucker\*\*

**Conductor**  
Enrique Mazzola

**Chorus Director**  
Michael Black

\*\* Ryan Opera Center alumni

Maestro Enrique Mazzola is generously sponsored by Alice & John Butler, H. Gael Neeson, Sylvia Neil & Daniel Fischel, the Robert and Penelope Steiner Family Foundation, Mary Stowell, and the Zell Family Foundation as members of the Enrique Circle.



*Billy Corgan*

A NIGHT OF  
**Mellon  
Collie**  
AND INFINITE  
SADNESS

**November  
21 - 30, 2025**

An alt-rock  
masterpiece,  
reborn.



**World premiere**

*Sung in English with projected English titles*

Billy Corgan achieved stratospheric fame as the founder, frontman, and creative force behind the legendary Smashing Pumpkins. A Grammy winner whose powerful songwriting, commanding vocals, and inventive melodies were the foundation for the massive, decade-defining double album *Mellon Collie and the Infinite Sadness*, Corgan now teams up with Lyric Opera of Chicago, his hometown company, to celebrate the 30th anniversary of this groundbreaking album with his signature boundary-pushing, innovation, and imagination.

The result is *A Night of Mellon Collie and Infinite Sadness*, a new commission inspired by one of the greatest alternative albums of all time. You'll hear Billy Corgan and special guest artists along with the epic sound of the Lyric Opera Orchestra and Chorus in a completely new sonic and visual experience. Whether you love the Pumpkins and are excited to hear their music in a sumptuous new dimension, or you simply crave the opportunity to hear a new work inspired by the unexpected, this promises to be one of the can't-miss cultural collaborations of the season.

**Composer**

Billy Corgan\*

**Arrangements & Orchestrations**

James Lowe and Billy Corgan

**Conductor**

James Lowe

**Chorus Director**

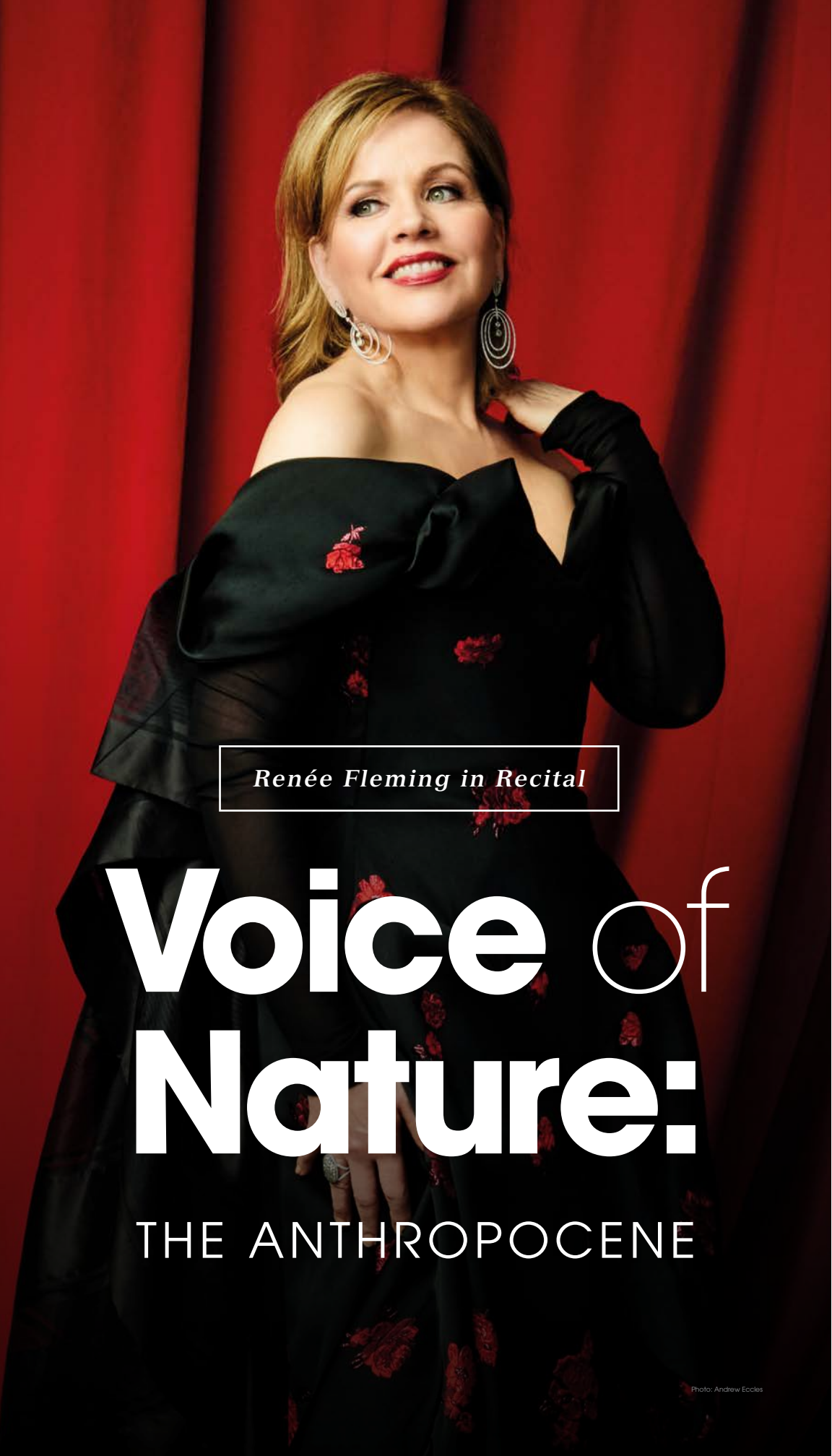
Michael Black

**Costumes**

House of Gilles by Gilles and Chloe Mendel\*

\* Lyric Opera of Chicago debut





*Renée Fleming in Recital*

# Voice of Nature:

## THE ANTHROPOCENE

Photo: Andrew Eccles

**Thursday,  
February 5, 2026  
at 7 P.M.**

One of the world's  
great artists explores  
our connection to the  
natural world.

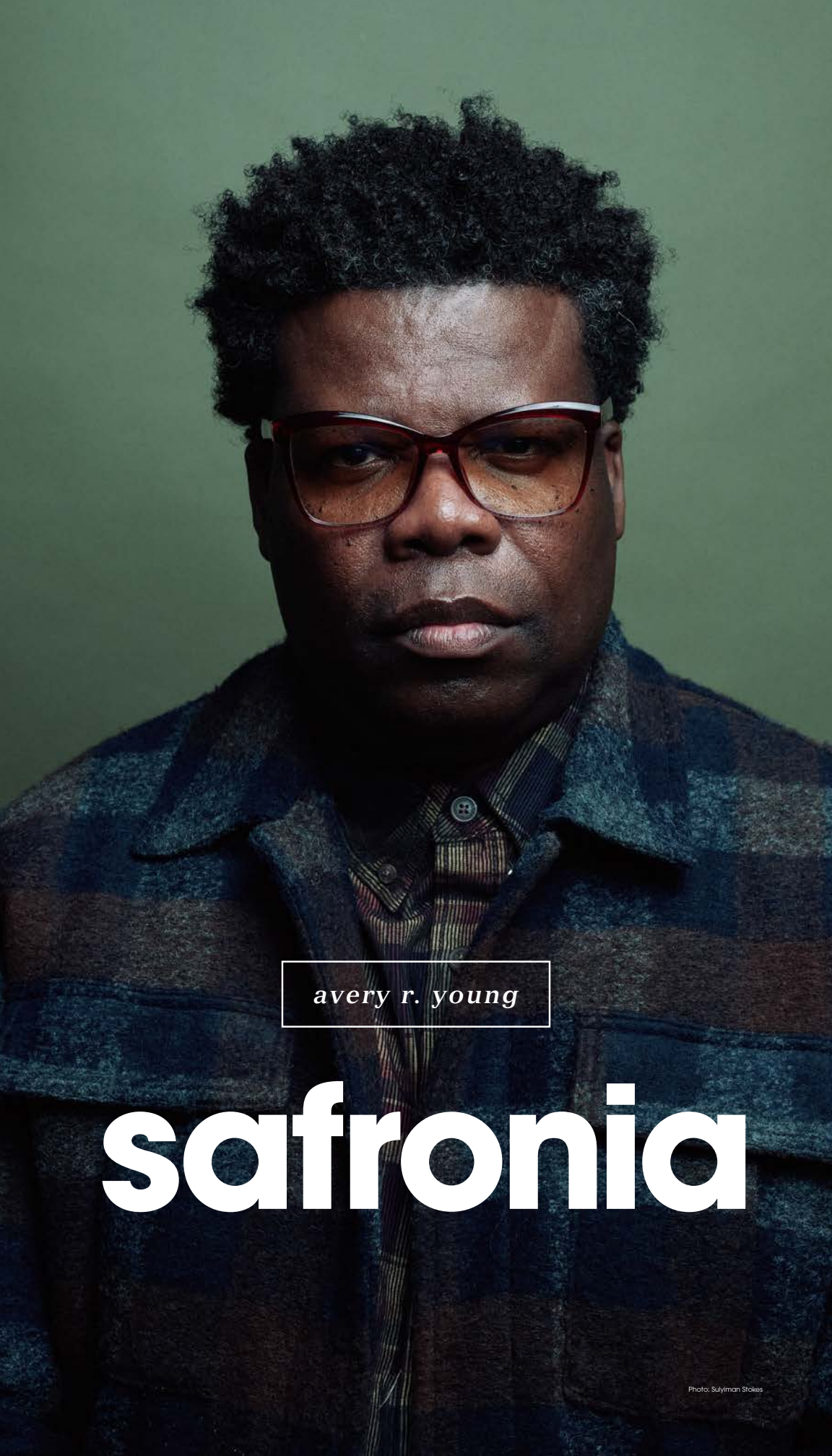
### *Lyric premiere*

International superstar Renée Fleming makes her much-anticipated return to the Lyric Opera of Chicago stage with a program based on her 2023 Grammy-winning Best Classical Vocal Solo Album. Created in partnership with the National Geographic Society, *Voice of Nature: The Anthropocene* blends classic Romantic Era works and contemporary works in a program that captures the evolution of the human experience in nature.

With video curated by the National Geographic Society, Renée Fleming and pianist Inon Barnatan create an eclectic performance that allows audiences the opportunity for reflection on the beauty of our planet and to rekindle a love for the natural world through song.



Photo: Peter Smith Photography



avery r. young

# safronia

Photo: Sulymon Stokes

**April  
17 & 18, 2026**

Be the first to experience  
this remarkable work by  
one of Chicago's most  
exciting voices.

*A world premiere commissioned  
by Lyric Opera of Chicago*

*Performed in English*

For two performances only, Lyric presents a world premiere musical work from Chicago's first-ever poet laureate, the celebrated interdisciplinary artist avery r. young. From the first note, *safronia* will draw you in with its compelling storytelling.

Triumph and tragedy converge in a personal yet universal story of the Great Migration. This Afro-surrealist tale is told through the eyes of the Booker family, who return from the northern U.S. to their Southern hometown after five years of banishment to bury their patriarch.

Conceived following young's groundbreaking collaboration with Lyric around *Twilight: Gods* in 2021, *safronia* marries folklore, poetry, and history, with gospel, blues, funk, and soul. The result is an inspiring, immersive, and vibrant performance experience born from an authentic Chicago story.

**Director**

Timothy Douglas\*

\* Lyric Opera of Chicago debut

Lyric's presentation of avery r. young's *safronia* is generously made possible by the **Pritzker Traubert Foundation**.





# Lyric Opening Concert & Gala

*Save the Date*  
**Friday, October 10, 2025 at 7P.M.**

Join us as our city ushers in the start of a new cultural season at Lyric Opera of Chicago! You'll want to be part of this very special event where you'll mingle with fellow arts lovers and be treated to an extraordinary performance by a to-be-revealed guest artist with the full forces of the Lyric Opera Orchestra. Save the date now and anticipate full details to come!

## Gala Event

Enhance your experience by joining us for cocktails before the concert, then dine and dance the night away at our Lyric Opening Gala. You are the star as you walk the red carpet and enjoy premium seats to the most anticipated concert of the year.

Concert tickets start at \$2,000. For more information about premium packages, please contact the Events Office at **312.827.5676** or **[gala@lyricopera.org](mailto:gala@lyricopera.org)**.

Lyric Opening Gala is a project of the Women's Board and is generously sponsored by **Lisbeth Stiffel**, **Karen Z. Gray-Krehbiel & John H. Krehbiel, Jr.**, and the **Segal Family Foundation**.



Opera in the Neighborhoods returns for both school and public performances in the 2025/26 Season with *Katie: The Strongest of the Strong*. This powerful opera for young audiences is inspired by the true story of Katie Sandwina, a circus strongwoman who — beyond earning the title “the strongest woman in the world,” and being a wife and mother — also helped to lead the women’s suffrage movement in the early 1900s. With an all-female cast, *Katie: The Strongest of the Strong* is a wonderful way to introduce young people to opera and the important history of women’s rights.

**Composer**  
Faye Chiao

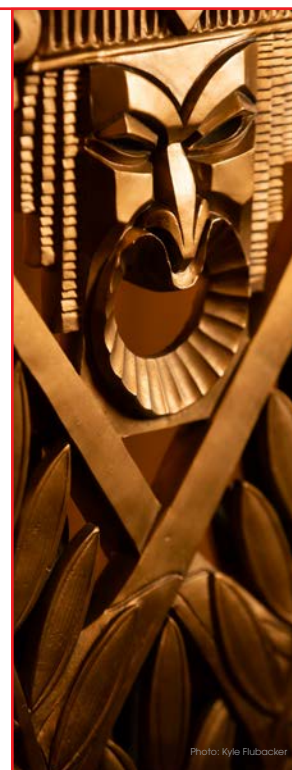
**Librettist**  
Anton Dudley

**Set Designer**  
Austin Abernathy\*

**Costume Designer**  
Clair Hummel\*

\* Lyric Opera of Chicago debut

*Katie: The Strongest of the Strong*  
An opera for all  
Music by Faye Chiao  
Libretto by Anton Dudley  
Commissioned by the Houston Grand Opera  
Premiered by the Houston Grand Opera  
in October 2020



## Explore Your Lyric

**Saturday, April 18, 2026**  
**11A.M. - 2P.M.**

**A day of fun and  
adventure for all ages  
at the Lyric Opera House.**

Lyric throws open the doors — and the curtains! — to welcome people of all ages into the Lyric Opera House for a day of exploration and fun. Venture beyond the footlights for interesting presentations on stage movement, the chance to peek into the orchestra pit, some hands-on fun for our youngest audiences, and even live music. We can’t wait to welcome you to your Lyric Opera House!





# Sunday in the Park with Lyric

**Sunday, September 7, 2025 at 7P.M.**

*Jay Pritzker Pavilion, Millennium Park,  
201 E. Randolph St, Chicago*

There's nothing like *Sunday in the Park with Lyric*, as artists from The Patrick G. and Shirley W. Ryan Opera Center perform a variety of favorites conducted by Music Director Enrique Mazzola with members of the Lyric Opera Orchestra. Grab your music-loving friends, a blanket or lawn chair, some snacks, and join us for this free, fun, and friendly can't-miss delight under the stars that always signals the start of a new cultural season!

Seating is first-come, first-served for this free event and no tickets are required.

Lyric's presentation of *Sunday in the Park with Lyric* is generously supported through an endowment by an **Anonymous Foundation** with additional support from the **Rhoda & Henry Frank Family Foundation**.

Maestro Enrique Mazzola is generously sponsored by **Alice & John Butler, H. Gael Neeson, Sylvia Nell & Daniel Fischel**, the **Robert and Penelope Steiner Family Foundation, Mary Stowell**, and the **Zell Family Foundation** as members of the Enrique Circle.

## The Patrick G. and Shirley W. Ryan Opera Center

### Ryan Opera Center Final Auditions

**Sunday, September 14, 2025 at 12P.M.**

Join us at this free event to watch more than 20 finalists representing the world's finest emerging artists audition for a spot in the Ryan Opera Center's 2026/27 Ensemble. This is a unique opportunity to hear opera's future stars and participate by voting for the Audience Favorite Award.

### Rising Stars in Concert

**Saturday, April 25, 2026 at 7:30P.M.**

Join us for this free, annual showcase of The Patrick G. and Shirley W. Ryan Opera Center, featuring the 2025/26 Ensemble and the Lyric Opera Orchestra. This is a chance to experience some of the most brilliant emerging operatic artists in the field.







## Dining at Lyric

Complete your experience by enjoying a meal at one of the fine restaurants at Lyric Opera of Chicago before your performance.

### THE WILLIAM B & CATHERINE GRAHAM ROOM

The William B. and Catherine Graham Room is Lyric's luxurious home for annual contributors at the Distinguished Patron level or above. Enjoy innovative cuisine by J & L Catering, an extensive wine list, and superb service in an exclusive setting.

### *Florian*

The Florian is Lyric's stylish third-floor restaurant, now open for evening and matinee dining. Enjoy the perfect pre-show meal at The Florian, a classic supper club focused on prime rib, classic cocktails, and a thoughtfully curated wine list, conveniently located within the Lyric Opera House. The Florian also features a full bar and extensive whiskey list that is available before and after the show as well as during intermission for both pre-order and walk-up cocktails.

For more information, visit [lyricopera.org/dining](http://lyricopera.org/dining).



### Mozart Così fan tutte



### Richard Strauss Salome





## Invest in the beauty you find at Lyric

More than half of subscribers choose to support Lyric — beyond the price of tickets — by including a tax-deductible donation with their purchase. **Will you join our chorus of contributors this year?**

By adding a donation when renewing your subscription, you play a pivotal role in ensuring that Lyric Opera of Chicago remains a cultural cornerstone, enriching the lives of Chicagoans and beyond for generations to come. Your gift — no matter the amount — helps bring world-class talent to our stage and preserve our beloved art form. We deeply appreciate your investment and invite you to join these passionate supporters in shaping the future of Lyric.




Learn more about the Lyric donor experience at [lyricopera.org/join](https://lyricopera.org/join).

Photo: Lyric Opera of Chicago / Liz Lauren



## Accessibility programs

Lyric strives to make the opera experience accessible for all patrons by providing services for those who may need assistance. In addition to services in the house for patrons with mobility issues, Lyric offers:

- **Braille and large-print program books.**
- **High-powered opera glasses.**
- **Audio-described performances** with narration which guides the listener through the performance. Look for the  icon next to performances on the Lyric calendar.
- **Guided touch tours** for patrons who are blind or have low-vision, prior to select performances.
- **SoundShirts.** Lyric is proud to be the first opera company in the world to bring audiences who are deaf or hard of hearing a real-time, fully immersive touch sensation of live music. The SoundShirt provides nuanced, physical vibrations of the opera's music and voices through a comfortable jacket that is light and fun to wear. Look for the  icon.
- **American Sign Language interpreted performances** for select dates of shows performed in English, spoken and sung text will be translated into American Sign Language by two certified interpreters located near the stage. Select seats are reserved to give you the best sight lines to follow the interpretation and all the action on stage. Look for the  icon.

Additional services including wheelchair and companion seating, accessible restrooms, FM assistive listening devices, accommodation of service animals, and more are available.  
[lyricopera.org/accessibility](https://lyricopera.org/accessibility)



# Benefits & beyond

A Lyric subscription is the best way to get the most out of your experience. Subscribers get special benefits along with the best prices of the season, including priority access, event invitations, and more.

## FIRST IN LINE

All subscribers get priority renewal, the best seats before tickets go on sale to the general public, and early access to special events.

## SPECIAL PRICES

Subscribers save 10% on any additional opera and special event tickets and receive periodic special offers throughout the season. Child ticket prices also available for opera performances.

## NO EXCHANGE FEES

Exchanges are free for subscribers up to five days before a performance. Service fees apply to upgrades in seating section or date. Value Series subscribers may only exchange within the first three dates (excluding Sundays) of any 2025/26 opera production, otherwise upgrade fees will apply.

## TRADEONE™

Subscribers to fixed 4-, 5-, 6- or 7-opera series may trade one opera in their lineup for one that is not. Service fees apply.

## EASY PAYMENT PLANS

Just 25% down secures your series with no additional processing or handling fees. Call us for a custom payment plan that works for you!

## FREE PRE-OPERA TALKS

All ticket holders are welcome to arrive one hour before curtain time and enjoy an engaging overview of each opera's music, characters, composer, and more. *Lyric Opera Pre-opera talks are supported by Raynette and Ned Boshell.*

## OPERA AMERICA'S PASSPORT PROGRAM

Lyric Opera subscribers now have access to a host of reciprocal discounts at opera companies around the country thanks to Opera America's Passport Program. We'll send you private access to discounts of at least 10% at more than 80 opera companies nationwide.

## INVITATIONS TO EXCLUSIVE EVENTS

You'll be invited to exclusive events throughout the season including the exciting Season Launch event each year!

## PRIORITY DINING RESERVATIONS

Subscribers receive first priority for reservations for The Florian, Lyric's third floor supper club, and for Lyric donors at the Distinguished Patron level and higher, for The William B. and Catherine Graham Room.

## DISCOUNTED PARKING

Lyric subscribers enjoy special low rates at nearby parking facilities. When purchasing in advance, subscribers can park starting at \$15 at the Poetry Garage and \$10 at Washington Madison Wells Self Park on weekend and weekday evening performances. Visit [lyricopera.org/parking](https://lyricopera.org/parking) for more information.



# Fixed series

Weekday evening opera performances are at 7pm. Weekend evening performances are at 7:30pm and all opera matinees begin at 2pm. Special event start times vary.

## 7-OPERA SERIES

D	MA	VALUE (V)
<i>Mostly Saturdays</i>	<i>All Sundays</i>	<i>Mixed Days</i>
<b>Medea</b>	<b>Medea</b>	<b>Medea</b>
Sat 10/11/25	Sun 10/26/25	Mon 10/20/25
<b>Cav/Pag</b>	<b>Cav/Pag</b>	<b>Cav/Pag</b>
Sat 11/1/25	Sun 11/9/25	Tue 11/4/25
<b>Carmina</b>	<b>Carmina</b>	<b>Carmina</b>
Fri 11/14/25	Sun 11/16/25	Fri 11/14/25
<b>Così</b>	<b>Salome</b>	<b>Salome</b>
Sat 2/7/26	Sun 1/25/26	Thu 1/29/26
<b>Salome</b>	<b>Così</b>	<b>Così</b>
Sat 2/14/26	Sun 2/15/26	Tue 2/10/26
<b>Frida</b>	<b>Frida</b>	<b>Butterfly</b>
Sat 3/21/26	Sun 3/29/26	Thu 3/19/26
<b>Butterfly</b>	<b>Butterfly</b>	<b>Frida</b>
Sat 3/28/26	Sun 4/12/26	Thu 3/26/26

## 6- AND 7-OPERA SERIES

G	H
<i>All Tuesdays</i>	<i>Mostly Fridays</i>
<b>Medea</b>	<b>Medea</b>
Tue 10/14/25	Fri 10/17/25
<b>Cav/Pag</b>	<b>Cav/Pag</b>
Tue 11/4/25	Fri 11/7/25
<b>Carmina</b>	<b>Salome</b>
Tue 11/18/25	Fri 2/6/26
<b>Salome</b>	<b>Così</b>
Tue 2/3/26	Fri 2/13/26
<b>Così</b>	<b>Butterfly</b>
Tue 2/10/26	Sat 3/14/26
<b>Frida</b>	<b>Frida</b>
Tue 3/24/26	Thu 3/26/26
<b>Butterfly</b>	
Tue 3/31/26	

## 4- AND 5-OPERA SERIES

H3	G3	D1	D2
<i>Mixed Days</i>	<i>Mondays &amp; Tuesdays</i>	<i>Mostly Saturdays</i>	<i>Mostly Saturdays</i>
<b>Medea</b>	<b>Medea</b>	<b>Medea</b>	<b>Medea</b>
Fri 10/17/25	Mon 10/20/25	Sat 10/11/25	Fri 10/17/25
<b>Cav/Pag</b>	<b>Carmina</b>	<b>Cav/Pag</b>	<b>Cav/Pag</b>
Sat 11/15/25	Tue 11/18/25	Sat 11/1/25	Sat 11/15/25
<b>Salome</b>	<b>Così</b>	<b>Carmina</b>	<b>Così</b>
Fri 2/6/26	Tue 2/10/26	Fri 11/14/25	Sat 2/7/26
<b>Butterfly</b>	<b>Butterfly</b>	<b>Frida</b>	<b>Salome</b>
Thu 3/19/26	Mon 4/6/26	Sat 3/21/26	Sat 2/14/26
		<b>Butterfly</b>	<b>Butterfly</b>
		Sat 3/28/26	Sat 3/14/26

## 4- AND 5-OPERA MATINEE SERIES

MB	MG	MC
<i>All Wednesdays</i>	<i>Mostly Thursdays</i>	<i>Mostly Sundays</i>
<b>Cav/Pag</b>	<b>Medea</b>	<b>Cav/Pag</b>
Wed 11/12/25	Thu 10/23/25	Sun 11/23/25
<b>Così</b>	<b>Cav/Pag</b>	<b>Così</b>
Wed 2/4/26	Thu 11/20/25	Sun 2/1/26
<b>Salome</b>	<b>Butterfly</b>	<b>Butterfly</b>
Wed 2/11/26	Thu 4/9/26	Sun 3/22/26
<b>Butterfly</b>	<b>You choose*</b>	<b>Frida</b>
Wed 3/25/26		Sat 4/4/26
<b>Frida</b>		
Wed 4/1/26		

## 6- AND 7-OPERA SERIES

G1	H1
<i>All Tuesdays</i>	<i>Mostly Fridays</i>
<b>Medea</b>	<b>Medea</b>
Tue 10/14/25	Fri 10/17/25
<b>Cav/Pag</b>	<b>Cav/Pag</b>
Tue 11/4/25	Fri 11/7/25
<b>Carmina</b>	<b>Salome</b>
Tue 11/18/25	Fri 2/6/26
<b>Salome</b>	<b>Così</b>
Tue 2/3/26	Fri 2/13/26
<b>Così</b>	<b>Butterfly</b>
Tue 2/10/26	Sat 3/14/26
<b>Frida</b>	<b>Frida</b>
Tue 3/24/26	Thu 3/26/26
<b>Butterfly</b>	
Tue 3/31/26	

\* We invite you to select a date for any opera that is not already in your series to complete your subscription. While your regular seats may not be available, we will work to accommodate you with seats as close to your usual subscription seats as possible.

## These fixed-date series offer:

- **Excellent value** over single ticket prices.
- **Fee-free exchanges** completed up to five days before your performance date.
- The **option to TRADEONE™** opera in your series for an opera that is not. Service fees apply.
- **Priority seating** — our fixed-date subscribers have access to the best seats in the house, and priority renewal.



Photo: Canadian Opera Company/Michael Cooper



# Pricing

Whether you prefer a front and center view of the stage, or you’re seeking a great deal like four operas from \$120, Lyric offers a package to suit your taste and budget!

NEW!

## All-inclusive pricing

Starting with the 2025/26 Season, we've embedded costs which support the upkeep of our historic building and our call center into your ticket price, so there are no surprises at check-out! (Service fees may apply to opt-in services.)

FLOOR		MAIN FLOOR							2ND	3RD		4TH		5TH	6TH
		Select	Prime	MF 1	MF 2	MF 3	MF 4	MF 5	Box	FB 1	FB 2	FB 3	FB 4	UB 1	UB 2
Series	# of Operas	Center	Center	Balance	All Seats	Center	Center	Balance		Dress Circle					

## FIXED-DATE SERIES

D	7	2198	2002	1456	1456				2198	1533				553	280
G	7	1834	1673	966	966				1834	1155				392	196
H	6	1572	1434	828	828				1572	990				336	168
Value Series <small>Savings of up to 50% off individual ticket prices</small>	7		1113	826	826	532	413	336	1267	924	658	504	287	329	168
G1	7					623	469	427			784	588	308		
H1	6					534	402	366			672	504	264		
D1, D2	5					680	510	370			775	590	365		
G3	4	1064	972	568	568				1064	684				264	120
H3	4	1064	972	568	568	404	296	256	1064	684	536	416	216	264	120
MA	7	2198	2002	1456	1456	952	714	518	2198	1533	1085	826	511	553	280
MB	5	1160	1060	760	760	605	455	340	1160	940	710	530	300	340	170
MC   Now 4 events	4	1156	1036	752	752	536	384	292	1156	820	612	468	272	308	160
MG	4	928	848	608	608	484	364	272	928	752	568	424	240	272	136

Section not available on select series.

## CREATE YOUR OWN (4 OR MORE SHOWS)

CYO PRICES SHOWN ARE PER SEAT

Prices below apply to *Medea*, *Cav/Pag*, *Salome*, *Così*, *Butterfly*, *Frida & Diego* and *Carmina Burana*. Additional programs are eligible as CYO building blocks with special pricing available online. Build your ideal package at [lyricopera.org/subscribe](#).

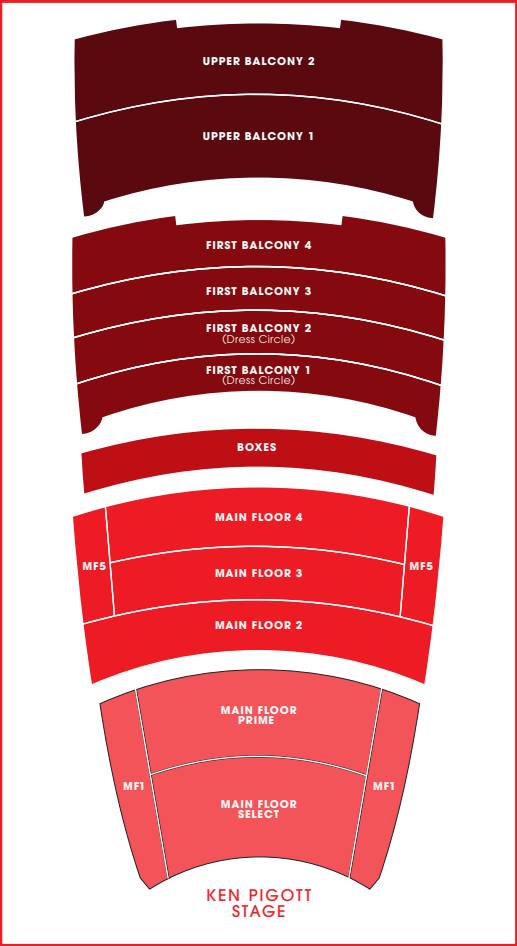
A* Operas   Highest demand	318	292	214	214	156	113	91	318	227	176	132	90	98	62
B* Operas	294	264	205	205	139	98	79	294	215	161	119	71	83	49
C* Operas   Best value	275	250	156	156	124	92	71	275	192	146	109	63	70	36

\* See calendar for A, B, C color coding by date.

## ADD-ON EVENTS

Specially discounted pricing is available for fixed series subscribers to add on Lyric season events that are not in your package. For detailed pricing, build your ideal package at [lyricopera.org/subscribe](#).

Subscribers have access to an exclusive 10% discount on additional tickets all year long.



**Questions?**  
Visit [lyricopera.org/subscribe](#) or call **312.827.5600** for assistance.

Prices shown include discounts. Prices are subject to change. Value Series subscribers may only exchange within the first three dates (excluding Sundays) of any 2025/26 opera production, otherwise upgrade fees will apply.

CYO seats will vary by event.

Aisle and adjacent seats are priced at a premium.

Individual events within your subscription may have unique pricing.

All pricing shown includes fees that were previously added at checkout that support upkeep of our historic building and our call center. Pricing is now all-inclusive.

Lyric reserves the right to sell up to eight seats per box for select performances.

Your philanthropic support, as well as your tenure as a subscriber, are taken into account when seats are assigned.

All subscription tickets will be sent via email for the 2025/26 Season. Box Office pickup will be available, beginning the week of September 15, 2025.

All casting and programming is subject to change but specified in good faith at the time of printing.

2025 | 26 Season

Visit [lyricopera.org/subscribe](https://lyricopera.org/subscribe) or call **312.827.5600** where our Audience Services staff is waiting to assist you — join us!

Sun	Mon	Tue	Wed	Thu	Fri	Sat
OCTOBER 2025						
5	6	7	8	9	10   7pm Opening Concert	11   7:30pm Medea D,D1
12	13	14   7pm Medea G,G1	15	16	17   7pm Medea H,H1,H3,D2	18
19	20   7pm Medea V,G3	21	22	23   2pm Medea MG	24	25

26   2pm Medea MA	27	28	29	30	31	
-------------------------	----	----	----	----	----	--

NOVEMBER 2025

						1   7:30pm Cav/Pag D,D1
2	3	4   7pm Cav/Pag V,G,G1	5	6	7   7pm Cav/Pag H,H1	8
9   2pm Cav/Pag MA	10	11	12   2pm Cav/Pag MB	13	14   7pm Carmina V,D,D1	15   7:30pm Cav/Pag H3,D2
16   2pm Carmina MA	17	18   7pm Carmina G,G1,G3	19	20   2pm Cav/Pag MG	21   7:30pm Mellon Collie	22   7:30pm Mellon Collie
23   2pm Cav/Pag MC	24	25   7:30pm Mellon Collie Eg	26   7:30pm Mellon Collie	27	28   7:30pm Mellon Collie	29   7:30pm Mellon Collie

30   7:30pm Mellon Collie						
------------------------------	--	--	--	--	--	--

JANUARY 2026

25   2pm Salome MA	26	27	28	29   7pm Salome V	30	31
--------------------------	----	----	----	-------------------------	----	----

FEBRUARY 2026

1   2pm Cosi MC	2	3   7pm Salome G,G1	4   2pm Cosi MB	5   7pm Renée Fleming	6   7pm Salome H,H1,H3	7   7:30pm Cosi D,D2
8	9	10   7pm Cosi V,G,G1,G3	11   2pm Salome MB	12	13   7pm Cosi H,H1	14   7:30pm Salome D, D2
15   2pm Cosi MA	16	17	18	19	20	21
22	23	24	25	26	27	28

PRICE COLOR KEY

Color key only applicable to CYO and Add On individual tickets.

Create your own series price dates



Other / special events



Sun	Mon	Tue	Wed	Thu	Fri	Sat
MARCH 2026						
8	9	10	11	12	13	14   7:30pm Butterfly H,H1,D2
15	16	17	18	19   7pm Butterfly V,H3	20	21   7:30pm Frida D,D1
22   2pm Butterfly MC	23	24   7pm Frida G,G1	25   2pm Butterfly MB	26   7pm Frida V,H,H1	27	28   7:30pm Butterfly D,D1

29   2pm Frida MA	30	31   7pm Butterfly G,G1				
-------------------------	----	-------------------------------	--	--	--	--

APRIL 2026

			1   2pm Frida MB	2	3	4   2pm Frida MC
--	--	--	------------------------	---	---	------------------------

5	6   7pm Butterfly G3	7	8	9   2pm Butterfly MG	10	11
---	----------------------------	---	---	----------------------------	----	----

12   2pm Butterfly MA	13	14	15	16	17   7pm safronia	18   2pm safronia
-----------------------------	----	----	----	----	----------------------	----------------------

OCTOBER 2025

10	Fri	Opening Concert	7pm
11	Sat	Medea	D,D1 7:30pm
14	Tue	Medea	G,G1 7pm
17	Fri	Medea	H,H1,H3,D2 7pm
20	Mon	Medea	V,G3 7pm
23	Thu	Medea	MG 2pm
26	Sun	Medea	MA 2pm

NOVEMBER 2025

1	Sat	Cav/Pag	D,D1 7:30pm
4	Tue	Cav/Pag	V,G,G1 7pm
7	Fri	Cav/Pag	H,H1 7pm
9	Sun	Cav/Pag	MA 2pm
12	Wed	Cav/Pag	MB 2pm
14	Fri	Carmina	V,D,D1 7pm
15	Sat	Cav/Pag	H3,D2 7:30pm
16	Sun	Carmina	MA 2pm
18	Tue	Carmina	G,G1,G3 7pm
20	Thu	Cav/Pag	MG 2pm
21	Fri	Mellon Collie	7:30pm
22	Sat	Mellon Collie	7:30pm
23	Sun	Cav/Pag	MC 2pm
25	Tue	Mellon Collie	7:30pm
26	Wed	Mellon Collie	7:30pm
28	Fri	Mellon Collie	7:30pm
29	Sat	Mellon Collie	7:30pm
30	Sun	Mellon Collie	7:30pm

JANUARY 2026

25	Sun	Salome	MA 2pm
29	Thu	Salome	V 7pm

FEBRUARY 2026

1	Sun	Cosi	MC 2pm
3	Tue	Salome	G,G1 7pm
4	Wed	Cosi	MB 2pm
5	Thu	Renée Fleming	7pm
6	Fri	Salome	H,H1,H3 7pm
7	Sat	Cosi	D,D2 7:30pm
10	Tue	Cosi	V,G,G1,G3 7pm
11	Wed	Salome	MB 2pm
13	Fri	Cosi	H,H1 7pm
14	Sat	Salome	D,D2 7:30pm
15	Sun	Cosi	MA 2pm

MARCH 2026

14	Sat	Butterfly	H,H1,D2 7:30pm
19	Thu	Butterfly	V,H3 7pm
21	Sat	Frida	D,D1 7:30pm
22	Sun	Butterfly	MC 2pm
24	Tue	Frida	G,G1 7pm
25	Wed	Butterfly	MB 2pm
26	Thu	Frida	V,H,H1 7pm
28	Sat	Butterfly	D,D1 7:30pm
29	Sun	Frida	MA 2pm
31	Tue	Butterfly	G,G1 7pm

APRIL 2026

1	Wed	Frida	MB 2pm
4	Sat	Frida	MC 2pm
6	Mon	Butterfly	G3 7pm
9	Thu	Butterfly	MG 2pm
12	Sun	Butterfly	MA 2pm
17	Fri	safronia	7pm
18	Sat	safronia	7:30pm



# The **2025** | 26 Season

Lyric Opening Concert & Gala

**Medea**

**Cavalleria rusticana & Pagliacci**

**Carmina Burana**

**A Night of Mellon Collie  
and Infinite Sadness**

**Salome**

**Così fan tutte**

**Renée Fleming: Voice of Nature**

**Madama Butterfly**

**El último sueño de Frida y Diego**

**safronia**

Lyric Opera of Chicago acknowledges support from the **Illinois Arts Council**.

Photo: Richard Sirausa. *El último sueño de Frida y Diego*. San Francisco Opera/Cory Weaver

Be inspired by a  
new season of great  
performances at Lyric.

📞 312.827.5600

🏠 [lyricopera.org/renew](https://lyricopera.org/renew)

**LYRIC OPERA**

**OF CHICAGO**

20 N Wacker Drive

Suite 860

Chicago, IL 60606

Non-profit org  
U.S. Postage  
**PAID**  
Chicago, IL  
Permit No. 6047