

Join us for the

2024 | 25 Season

Lyric
OPERA OF
CHICAGO

Rigoletto

Fidelio

The Marriage of Figaro

Blue

Sondra Radvanovsky in Concert:
The Puccini Heroines

La Bohème

The Listeners

Lyric in Concert:
A Wondrous Sound

Patti LuPone: A Life in Notes

ENRIQUE MAZZOLA
Music Director

 **Invesco QQQ**
Season Sponsor

Join us.

At the crossroads of thrilling music, transcendent voices, powerful storytelling, and grand-scale theatrical spectacle lies an art form that is more than 400 years old and yet continues to reinvent itself with each passing year. Timeless stories that tug at the heartstrings in the same way that they have for centuries are matched with cutting-edge new works that remind us that art is an important way to share the relevant issues of our time, taking a snapshot of our world for generations to come.

Step into the incredible beauty of the Lyric Opera House, an architectural gem and cultural hub that everyone in Chicago should experience and celebrate, and find yourself surrounded by a community of passionate and curious arts lovers. It's the perfect place to spend time with friends, family, clients, and colleagues, and to experience the life-affirming joy that a moving performance can provide — a feeling that stays with you long after the curtain has come down.

This is your Lyric.

We are so excited to share the new season together.

Lyric's 2024/25 Season is sponsored by **Erika Gross in loving memory of Dietrich Gross, Julie & Roger Baskes**, and **Invesco QQQ**.





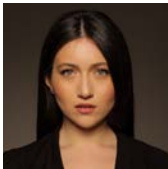
September 14, 18M, 22M, 25, 28
October 1, 6M

Sung in Italian with projected English titles

Adapting a powerfully dramatic play by Victor Hugo, Giuseppe Verdi brought astounding intensity to the court jester Rigoletto, tragically obsessed with avenging his daughter Gilda’s dishonor. The score’s highlights are unforgettable, from Rigoletto’s hair-raising denunciation of the Duke of Mantua’s courtiers, “Cortigiani,” to the immoral, philandering Duke’s “La donna è mobile,” to Gilda’s ecstatic “Caro nome.” Conducted by Music Director Enrique Mazzola, an acclaimed Verdian, Lyric’s visually sumptuous production stars the sensational baritone Igor Golovatenko. He’s joined by two other international luminaries making eagerly awaited company debuts: Mané Galoyan, the exquisite Armenian soprano, and Javier Camarena, the spectacular Mexican tenor.



RIGOLETTO
Igor
Golovatenko



GILDA
Mané
Galoyan*



**DUKE OF
MANTUA**
Javier
Camarena*



SPARAFUCILE
Soloman
Howard

Conductor
Director
Set Designer
Costume Designer
Lighting Designer
Chorus Director

Enrique Mazzola
Mary Birnbaum*
Robert Innes Hopkins
Jane Greenwood
Duane Schuler
Michael Black

M Matinee * Lyric debut

Lyric’s presentation of Verdi’s *Rigoletto* is generously made possible by **Randy L. & Melvin R.* Berlin**.
*deceased

Maestro Enrique Mazzola is generously sponsored by **Alice & John Butler, H. Gael Neeson, Sylvia Neil & Daniel Fischel**, and the **Robert and Penelope Steiner Family Foundation** as members of the Enrique Circle.



September 26, 29M

October 2M, 5, 10

New-to-Chicago production

Sung in German with projected English titles

Seeing and hearing Ludwig van Beethoven's only opera, *Fidelio*, onstage is a supremely moving experience. Listening to the "Prisoners' Chorus," you'll wonder if any other composer has so vividly communicated human beings' longing for freedom and sunlight. No operatic heroine is more courageous than Beethoven's Leonore, who disguises herself as a young man in order to work in the prison, hoping to rescue her husband. Music Director Enrique Mazzola conducts this timeless political thriller in Matthew Ozawa's production, praised as "transformative... a thoughtful examination of how we strive for the ideals of justice and freedom" (*Toronto Star*). Vocally radiant, uniquely charismatic South African soprano Elza van den Heever is joined by two exciting American artists and Lyric favorites — tenor Russell Thomas and baritone Brian Mulligan.



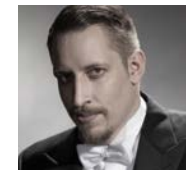
LEONORE
Elza van den
Heever



FLORESTAN
Russell
Thomas



PIZARRO
Brian
Mulligan



ROCCO
Mika Kares

Conductor
Director
Set & Projection Designer
Costume Designer
Lighting Designer
Chorus Director

Enrique Mazzola
Matthew Ozawa
Alexander V. Nichols*
Jessica Jahn
Yuki Nakase Link*
Michael Black

M Matinee *** Lyric debut**

A San Francisco Opera production.

Lyric's presentation of Beethoven's *Fidelio* is generously made possible by **Patricia A. Kenney & Gregory J. O'Leary**.

Maestro Enrique Mazzola is generously sponsored by **Alice & John Butler, H. Gael Neeson, Sylvia Neil & Daniel Fischel**, and the **Robert and Penelope Steiner Family Foundation** as members of the Enrique Circle.

The Marriage of Figaro

MOZART



November 9, 13, 17M, 19, 21M,
24M, 27M, 30

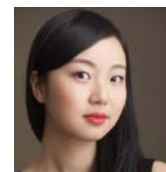
Sung in Italian with projected English titles

Considered one of the greatest operas ever written, Mozart's *The Marriage of Figaro* is a compelling study of human relationships. In the setting of Count Almaviva's castle, his servants, Figaro and Susanna, conspire to get the better of their willful employer, joined by his long-suffering wife, the Countess. Also on hand is opera's most lovable pageboy, Cherubino. Intrigue abounds in a matchless score by Mozart and librettist Lorenzo da Ponte that has enriched lives and spirits for generations.

Returning to direct her exhilarating Lyric production is Chicago theatrical legend Barbara Gaines. She'll collaborate with the electrifying young German conductor Erina Yashima in her Lyric debut, leading a cast of internationally celebrated Mozartians.



FIGARO
Peter Kellner*



SUSANNA
Ying Fang



COUNTESS ALMAVIVA
Federica Lombardi*



COUNT ALMAVIVA
Gordon Bintner*



CHERUBINO
Kayleigh Decker*

Conductor
Director
Set Designer
Costume Designer
Lighting Designer
Chorus Director
Choreographer

Erina Yashima*
Barbara Gaines
James Noone
Susan Mickey
Robert Wierzel
Michael Black
Harrison McEldowney

M Matinee * Lyric debut + Ryan Opera Center alumna

Lyric's presentation of Mozart's *The Marriage of Figaro* is generously made possible by **The Negaunee Foundation**, **Invenergy**, and **Randy L. & Melvin R.* Berlin**.

*deceased



TESORI/THOMPSON

Blue

November 16, 20, 22, 26

December 1M

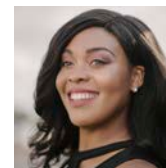
Lyric premiere

Sung in English with projected English titles

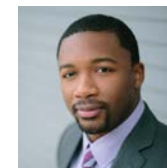
Blue is destined to become an American classic. Co-produced by Lyric, The Glimmerglass Festival, and Washington National Opera, the opera presents the moving story of a Black middle-class family in Harlem whose hopes and dreams for their teenage son are shattered when he is shot by a white police officer. Tony-winning composer Jeanine Tesori's magnificently moving music is matched by Tazewell Thompson's probing, deeply sensitive libretto. The vocally and theatrically formidable bass Kenneth Kellogg (Lyric debut), who scored a triumph in the world premiere and in productions around the world, plays opposite two outstanding American artists — mezzo-soprano Zoie Reams and baritone Norman Garrett — in this anticipated Chicago premiere.



FATHER
Kenneth
Kellogg*



MOTHER
Zoie
Reams



REVEREND
Norman
Garrett

Conductor

Director

Set Designer

Costume Designer

Lighting Designer

Joseph Young*

Tazewell Thompson*

Donald Eastman*

Jessica Jahn

Robert Wierzel

M **Matinee** * **Lyric debut**

Scenery and costumes for this production of *Blue* are co-produced by Lyric Opera of Chicago, Glimmerglass Festival, and Washington National Opera.

Lyric's presentation of Tesori and Thompson's *Blue* is generously made possible by **The Joyce Foundation**.

SONDRA RADVANOVSKY
IN CONCERT

The Puccini Heroines



February 8, 13, 16M

Sung in Italian with projected English titles

After Sondra Radvanovsky's Lyric triumphs in works by Bellini, Donizetti, and Verdi, Chicago audiences will at last have the chance to experience the American diva's brilliance as a Puccinian. Radvanovsky has earned rapturous international praise in the title roles of Puccini's *Manon Lescaut*, *Tosca*, *Suor Angelica*, and most recently *Turandot*. Music Director Enrique Mazzola will collaborate with her in a program including excerpts from each of Puccini's twelve operas — not only the popular masterpieces but also his less familiar, early operas. Given her magnificent voice, stylistic command, and incandescent dramatic powers, Radvanovsky was made for this tour-de-force performance.

Lyric's presentation of *Sondra Radvanovsky in Concert: The Puccini Heroines* is generously made possible by **Sonia Florian**.

Maestro Enrique Mazzola is generously sponsored by **Alice & John Butler, H. Gael Neeson, Sylvia Neil & Daniel Fischel**, and the **Robert and Penelope Steiner Family Foundation** as members of the Enrique Circle.



Cedric Angeles, Todd Rosenberg



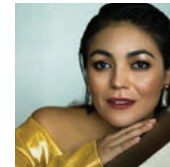
March 15, 19M, 22, 25, 28, 31

April 3M, 6M, 9, 12M

New-to-Chicago production

Sung in Italian with projected English titles

An ideal opera for first-timers, *La Bohème* has also never lost its appeal for the most passionate of opera lovers. Puccini brings unique beauty and sensitivity to this tale of young lovers in 19th-century Paris. With the famous arias of the ardent poet Rodolfo, the fragile seamstress Mimi, and the good-hearted party-girl Musetta, matched perfectly to the romance and heartbreak of this universal story, *La Bohème* is operatic perfection. At Lyric, two dazzling sopranos, Ailyn Pérez and Gabriella Reyes, are paired with the shining-voiced tenor Pene Pati (in his Lyric debut) and the vibrant baritone Will Liverman, in a production that will be a truly memorable moment in the company's longstanding tradition of great *Bohème* performances.



MIMI
Ailyn
Pérez



RODOLFO
Pene
Pati*



MUSETTA
Gabriella
Reyes



MARCELLO
Will
Liverman*



COLLINE
Peixin
Chen

Conductor
Director
Set Designer
Costume Designer
Chorus Director

Jordan de Souza
Melanie Bacaling*
Gerard Howland*
Peter J. Hall
Michael Black

M Matinee * Lyric debut + Ryan Opera Center alumnus

A production of Los Angeles Opera and Dallas Opera.



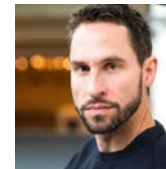
March 30^M
April 2, 5, 8, 11

Lyric premiere
Sung in English with projected English titles

The Listeners promises to be one of the most significant operatic events of the 2024/25 Season. Missy Mazzoli and Royce Vavrek, the renowned composer/librettist team, tell the story of Claire, who is driven nearly mad by an unending, low-frequency hum that she hears. In desperation, she joins a community organization, “The Listeners,” formed to discover the origin of the noise and destroy it. The group becomes frighteningly cult-like, ultimately leading to catastrophic consequences. Lyric’s vocally and dramatically brilliant cast will be conducted by Music Director Enrique Mazzola and directed by one of the most gifted theater artists of her generation, Lileana Blain-Cruz.



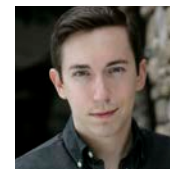
CLAIRE
Nicole
Heaston*



HOWARD
Kyle
Ketelsen



ASHLEY
Jasmine
Habersham*



KYLE
Jonas
Hacker



ANGELA
Daniela
Mack

Conductor
Director
Set Designer
Costume Designer
Lighting Designer
Video Designer
Chorus Director

Enrique Mazzola
Lileana Blain-Cruz*
Adam Rigg*
Kaye Voyce*
Yi Zhao*
Hannah Wasileski*
Michael Black

M Matinee * **Lyric debut**

Co-commissioned and co-produced by Lyric Opera of Chicago, Norwegian National Opera, and Opera Philadelphia.

Lyric’s presentation of Mazzoli and Vavrek’s *The Listeners* is generously made possible by Lead Sponsor the **Robert and Penelope Steiner Family Foundation** with additional support from production sponsor the **Zell Family Foundation**.

Maestro Enrique Mazzola is generously sponsored by **Alice & John Butler, H. Gael Neeson, Sylvia Neil & Daniel Fischel**, and the **Robert and Penelope Steiner Family Foundation** as members of the Enrique Circle.

Major support for *The New Work Fund* provided by the **Robert and Penelope Steiner Family Foundation, David W. Carpenter and Orit K. Carpenter**, in loving memory of David W. Carpenter, and **Virginia Tobiason**.



LYRIC
IN CONCERT

A Wondrous Sound

April 16, 19M

Conductor **Enrique Mazzola**

Featuring the **Lyric Opera of Chicago Chorus & Orchestra**

Opera has long provided the soundtrack to our world, and Lyric invites you to join us for a program featuring some of the most thrilling overtures and favorite choral works in the entire repertoire. Celebrate the wondrous sound of opera through masterworks by Mozart, Puccini, and more as performed by the talented artists of the Lyric Opera of Chicago Chorus and Orchestra. From the most rousing, life-affirming, and joyful of works, to the quiet, introspective beauty that only great music can provide, we'll be guided through our program by Music Director Enrique Mazzola as he shares favorites — and some of your favorite composers' more rarely-performed works. You'll even have the chance to play a starring role in creating the music yourself! Don't miss this unique opportunity to enjoy a concert featuring the most anticipated moments in opera.

“ The Lyric Chorus and Orchestra are the stars of so many of our productions, and this program is a unique opportunity to really shine a spotlight on their artistry. Whether you are a longtime opera lover and these works are among your favorites, or you are new to opera and just starting your journey, we can't wait to come together for this special concert line-up!

Enrique Mazzola



Todd Rosenberg, Joe Mazza

Patti LuPone

A LIFE IN NOTES



October 4, 2024 at 7:00PM

A one-night-only event

Music has the power to crystallize a moment in time and evoke eras. In her new concert, *Patti LuPone: A Life in Notes*, the three-time Tony Award winner performs an array of songs which do just that — songs that are touchstones and reflections on her life. In a new show conceived and directed by Scott Wittman and written by Jeffrey Richman, LuPone makes her Lyric debut alongside her longtime musical director Joseph Thalken, in a special evening to celebrate the opening of a new season at Lyric.

“Patti LuPone is that very particular kind of animal, perhaps the last of the breed, a genuine Golden Age Broadway star, the kind that can turn a theater into a living room, throwing out an electric current that makes 1,000 people feel as if they are being spoken to, and sung to, individually.

The New York Times

SEASON OPENING GALA

Enhance your experience by joining us for cocktails before the concert, then dinner and dancing the night away at our Season Opening Gala. Walk the red carpet like a star and enjoy premium seats to the most anticipated concert of the year.

For more information about premium packages, please contact the Development Office at **312.827.5676** or **gala@lyricopera.org**.

Lyric's Season Opening Gala is a project of the Women's Board.



Douglas Friedman

PROGRAMMING FOR OPERA LOVERS OF ALL AGES



Fall 2024 and Spring 2025

Music by **Joe Illick** Libretto by **Mark Campbell**

Join us for our 2024/25 Opera in the Neighborhoods public performances of *Frida Kahlo and the Bravest Girl in the World*, a story about facing your fears, learning new things, and the power of friendship.

The story, based on the acclaimed book by author and illustrator Laurence Anholt, follows the real-life friendship of Marianna, a young girl living in the heart of Mexico City, and Frida Kahlo, the famed artist. When Marianna plucks up her courage to go and meet Frida, a friendship blossoms between them. You'll meet Frida's husband, artist Diego Rivera, as well as a singing parrot, dog, and monkey — and young people will delight in the opportunity to participate in this charming musical journey!

Details about dates and tickets will be released Summer 2024.
Learn more at lyricopera.org/Frida.

While written for young audiences, music and art lovers of all ages will enjoy *Frida Kahlo and the Bravest Girl in the World*. Approximately 45 minutes with General Admission seating.

Adapted from the book *Frida Kahlo and the Bravest Girl in the World* by Laurence Anholt. Commissioned by Fort Worth Opera. Licensed by arrangement with the Barbara Hogenson Agency, Inc. Scenery and Props designed by Brandon David Riel. Costumes designed by Carrie Rees. The production was constructed by Seattle Opera.

Opera in the Neighborhoods is supported by Lead Sponsor CIBC with major support from the Nancy W. Knowles Student and Family Performances Fund.

EXPLORE YOUR LYRIC

A day of fun and adventure for all ages at Lyric Opera House.

Save the date: Saturday, April 26, 2025 11am - 3pm

Save the date in April 2025 when Lyric throws open the doors — and the curtains! — to welcome people of all ages into the Lyric Opera House for a day of exploration and fun. If you've always longed to see beyond the footlights and get a glimpse of how the art is made behind-the-scenes, this is a perfect opportunity to experience it all. From exciting presentations on stage movement to live music, the chance to peek into the orchestra pit, and hands-on fun, it will be a day to remember. We can't wait to welcome you to your Lyric Opera House!

Details about dates and tickets will be released Summer 2024.
Learn more at lyricopera.org/ExploreLyric

Sunday IN THE Park WITH LYRIC

Sunday, August 25, 2024 at 7pm

Jay Pritzker Pavilion, Millennium Park, 201 E Randolph St, Chicago

Join us for an evening of beautiful music as artists from The Patrick G. and Shirley W. Ryan Opera Center perform a variety of favorites from the 2024/25 Season accompanied by members of the Lyric Opera Orchestra and conducted by Lyric Music Director Enrique Mazzola. Bring a blanket, your favorite snacks, your fellow music lovers, and those you can't wait to introduce to opera for this free, fun, and friendly can't-miss summer delight that always ushers in a new cultural season on a high note.

Seating is first-come, first-served for this free event and no tickets are required.

Sunday in the Park with Lyric is generously supported through an endowment by an **Anonymous Foundation** with additional support from the **Rhoda & Henry Frank Family Foundation**, the **Chicago Department of Cultural Affairs & Special Events**, and **Sipi Metals Corporation**.



Kyle Flubacker

The Patrick G. and Shirley W. Ryan Opera Center

Save the dates

Invitations will be sent closer to the events.

Ryan Opera Center Final Auditions

Sunday, September 8, 2024 at 12 Noon

Join us to watch more than 20 finalists representing the world's finest emerging artists audition for a spot in the Ryan Opera Center's 2025/26 Ensemble. This is a unique opportunity to hear opera's future stars and participate by voting for the Audience Favorite Award.

Rising Stars in Concert, 50th Anniversary Celebration

Friday, April 25, 2025

Join us to celebrate The Patrick G. and Shirley W. Ryan Opera Center's 50 incredible years of nurturing the talents of many of opera's brightest stars!

This annual showcase features the 2024/25 Ensemble performing with the Lyric Opera Orchestra in the Ardis Krainik Theatre, conducted by Music Director Enrique Mazzola and directed by Lyric's own Matthew Ozawa. See some of the most thrilling emerging operatic artists in the field, plus see some familiar faces pay tribute to the Ryan Opera Center's half-century legacy.

Following the concert, join us for the Ryan Opera Center's 50th Anniversary Gala and help support the program's work for the next five decades! For more information on the Rising Stars Gala, contact the Development Office at 312.827.5676 or gala@lyricopera.org.



Ryan Opera Center Final Auditions, Lyric Opera of Chicago



Dining at Lyric

Complete your experience by enjoying a meal at one of the fine restaurants at Lyric Opera of Chicago before your performance.

THE WILLIAM B & CATHERINE GRAHAM ROOM

The William B. and Catherine Graham Room is Lyric's luxurious home for annual contributors at the Distinguished Patron level. Enjoy innovative cuisine, an extraordinary wine list, and superb service in an exclusive setting.

Florian

Enjoy the perfect pre-show meal at **The Florian**, a classic supper club focused on prime rib, classic cocktails, and a thoughtfully curated wine list, conveniently located on the third floor of the Lyric Opera House. The Florian also features a full bar and extensive whiskey list that is available before and after the show as well as during intermission.

For more information, visit lyricopera.org/dining

Kristen Mendiola

In the tapestry of human emotion, **opera is where the arts unite.**

Strengthen the bonds that connect us all.
Donate today.


By including a donation with your subscription purchase, you play an even larger role in the vitality of this timeless art form. Your generosity directly empowers artists, enriches our cultural fabric, creates shared human experiences, and ensures the legacy of opera for generations to come. It's more than just a contribution; it's an investment in the captivating storytelling, unique artistry, and euphoric moments that define opera. Your loyalty and compassion sustain opera's splendor. Thank you for your kind support.

Learn more about the Lyric donor experience at lyricopera.org/join.

Accessible programs

Lyric strives to make the opera experience accessible for all patrons by providing services for those who may need assistance. In addition to services in the house for patrons with mobility issues, Lyric offers braille and large-print program books, and high-powered opera glasses for patrons who are blind or have low vision. Opera is for everyone, and we can't wait to welcome you to the Lyric Opera House. For more information on accessibility services, visit lyricopera.org/accessibility.


Audio-described performances

Audio-described performances are scheduled for each production and include a live narration which guides the listener through the performance with concise, objective descriptions of new scenes, settings, costumes, and body language at appropriate times throughout the performance. Look for the  icon.

SoundShirts

Lyric has long offered assistive listening devices for those who are hard of hearing, but in 2023, Lyric was proud to be the first opera company in the world to bring audiences who are deaf or hard of hearing a real-time, fully immersive touch sensation of live music. The SoundShirt provides nuanced, physical vibrations of the opera's music and voices through a comfortable jacket that is light and fun to wear. Look for the  icon next to performances on the Lyric calendar.

American Sign Language interpreted performances

On select dates of shows which are performed in English, spoken and sung text will be translated into American Sign Language by two certified interpreters located near the stage. Select seats are reserved to give you the best sight lines to follow the interpretation and all the action on stage. Look for the  icon.

Backstage tours

In the 2024/25 Season, lovers of great opera, theater, architecture, and more are invited to step behind the footlights with public backstage tours at the historic Lyric Opera House. Offered on select dates throughout the season, backstage tours are a great way to get to know the legends and lure of one of Chicago's most magnificent theatrical spaces. Details and dates to come in Summer 2024. Student and group tours will also be available!

For more information, visit lyricopera.org/backstagetours.

Benefits & beyond

A Lyric subscription is the best way to get the most out of your experience. Subscribers get special benefits along with the best prices of the season, including priority access, event invitations, and more.

FIRST IN LINE

All subscribers get priority renewal, the best seats before tickets go on sale to the general public, and early access to special events.

SPECIAL PRICES

Subscribers save 10% on any additional opera and selected special events and receive periodic special offers throughout the season. Child ticket prices are also available for opera performances.

NO EXCHANGE FEES

Exchanges are free for subscribers up to five days before a performance. Fees apply to upgrades in seating section or date. Value Series subscribers may only exchange within the first three dates (excluding Sundays) of any 2024/25 opera productions, otherwise upgrade fees will apply.

TRADEONE™

Subscribers to fixed 3-, 4-, 5-, 6- or 7-opera series may trade one opera in their lineup for one that is not. Fees apply.

EASY PAYMENT PLANS

Just 25% down secures your series with no additional processing or handling fees. Call us for a custom payment plan that works for you!

FREE PRE-OPERA TALKS

All ticket holders are welcome to arrive one hour before curtain time and enjoy an engaging overview of each opera's music, characters, composer, and more.

Lyric Opera Pre-opera talks are supported by Raynette and Ned Boshell.

OPERA AMERICA'S PASSPORT PROGRAM

Lyric Opera subscribers now have access to a host of reciprocal discounts at opera companies around the country thanks to Opera America's Passport Program. We'll send you private access to discounts of at least 10% at more than 80 opera companies nationwide.

INVITATIONS TO EXCLUSIVE EVENTS

You'll be invited to exclusive events throughout the season including the exciting Season Launch event each year!

PRIORITY DINING RESERVATIONS

Subscribers receive first priority for reservations when they open for the new season at The Florian, and for Lyric's most generous patrons, The William B. and Catherine Graham Room.

DISCOUNTED PARKING

Lyric subscribers enjoy special low rates at nearby parking facilities. When purchasing in advance, subscribers can park for \$14 at the Poetry Garage and \$10 at Washington Madison Wells Self Park on weekend and weekday evening performances. Offer valid weeknights from 3pm-2am and up to 12 hours on weekends. Not valid for weekday matinees. Visit lyricopera.org/parking for more information.



The Marriage of Figaro, Andrew Cioffi/Lyric Opera of Chicago

Fixed series

Weekday evening opera performances are at 7pm. Weekend evening performances are at 7:30pm and all opera matinees begin at 2pm. Special event start times vary.

Casts and programs are subject to change without notice but are specified in good faith at time of printing.

7- AND 8-OPERA SERIES

D	MA	VALUE (V)
All Saturdays	All Sundays	Mixed Days
Rigoletto	Rigoletto	Rigoletto
Sat 9/14/24	Sun 9/22/24	Thu 9/26/24
Fidelio	Fidelio	Fidelio
Sat 10/5/24	Sun 9/29/24	Tue 10/1/24
Figaro	Figaro	Figaro
Sat 11/9/24	Sun 11/17/24	Tue 11/19/24
Blue	Blue	Blue
Sat 11/16/24	Sun 12/1/24	Tue 11/26/24
Radvanovsky	Radvanovsky	Radvanovsky
Sat 2/8/25	Sun 2/16/25	Thu 2/13/25
La Bohème	The Listeners	La Bohème
Sat 3/15/25	Sun 3/30/25	Mon 3/31/25
The Listeners	La Bohème	The Listeners
Sat 4/5/25	Sun 4/6/25	Wed 4/2/25
		Wondrous Sound
		Wed 4/16/25

3-, 4-, AND 5-OPERA MATINEE SERIES

MB	MG	MC
Mostly Wednesdays	Wednesday & Thursdays	Saturday & Sundays
Rigoletto	Fidelio	Rigoletto
Wed 9/18/24	Wed 10/2/24	Sun 10/6/24
Figaro	Figaro	Figaro
Wed 11/27/24	Thu 11/21/24	Sun 11/24/24
La Bohème	La Bohème	La Bohème
Wed 3/19/25	Thu 4/3/25	Sat 4/12/25
Wondrous Sound	You choose*	
Sat 4/19/25		
You choose*		

THESE FIXED-DATE SERIES OFFER:

- Excellent value over single ticket prices
- Fee-free exchanges completed up to five days before your performance date
- The option to trade one opera in your series for an opera that is not. Fees apply.
- Priority seating — our fixed-date subscribers have access to the best seats in the house, and priority renewal

6- AND 7-OPERA SERIES

G	H
Mixed days	Mixed days
Fidelio	Rigoletto
Thu 9/26/24	Sat 9/28/24
Rigoletto	Blue
Tue 10/1/24	Fri 11/22/24
Figaro	Figaro
Wed 11/13/24	Sat 11/30/24
Blue	Radvanovsky
Tue 11/26/24	Thu 2/13/25
La Bohème	La Bohème
Tue 3/25/25	Fri 3/28/25
The Listeners	The Listeners
Tue 4/8/25	Fri 4/11/25
Wondrous Sound	
Wed 4/16/25	

6- AND 7-OPERA SERIES

G1	H1
Mixed Days	Mixed Days
Rigoletto	Fidelio
Wed 9/25/24	Thu 9/26/24
Fidelio	Blue
Thu 10/10/24	Wed 11/20/24
Figaro	Figaro
Wed 11/13/24	Sat 11/30/24
Blue	Radvanovsky
Tue 11/26/24	Thu 2/13/25
La Bohème	La Bohème
Tue 3/25/25	Fri 3/28/25
The Listeners	The Listeners
Tue 4/8/25	Fri 4/11/25
Wondrous Sound	
Wed 4/16/25	

* Please choose the opera and date of your choice (outside of your current package offerings) to complete your subscription series. While your regular seats will not be available, we will work to accommodate you with seats as close to your usual subscription seats as possible.

4- AND 5-OPERA SERIES

H3	G3	D1	D2
Mixed Days	All Wednesdays	All Saturdays	Mostly Saturdays
Blue	Figaro	Rigoletto	Rigoletto
Fri 11/22/24	Wed 11/13/24	Sat 9/14/24	Sat 9/28/24
Radvanovsky	Blue	Fidelio	Figaro
Thu 2/13/25	Wed 11/20/24	Sat 10/5/24	Sat 11/9/24
La Bohème	The Listeners	Blue	Blue
Sat 3/22/25	Wed 4/2/25	Sat 11/16/24	Fri 11/22/24
The Listeners	La Bohème	Radvanovsky	La Bohème
Fri 4/11/25	Wed 4/9/25	Sat 2/8/25	Sat 3/22/25
		La Bohème	The Listeners
		Sat 3/15/25	Sat 4/5/25



Pricing

Whether you prefer a front and center view of the stage, or you’re seeking a great deal like four operas from \$100, Lyric offers a package to suit your taste and budget!

FLOOR		MAIN FLOOR							2ND	3RD	4TH		5TH	6TH
		Select	Prime	MF 1	MF 2	MF 3	MF 4	MF 5	Box	First Balcony			Upper Balcony	
Series	# of Operas	Center	Center	Balance	All Seats	Center	Center	Balance		Dress Circle				

FIXED-DATE SERIES

G I Now 7 Operas	7	1729	1575	910	910				1729	1092				364	175
D	7	2072	1890	1372	1372				2072	1449				511	252
H	6	1482	1350	780	780				1482	936				312	150
Value Series Savings of up to 50% off	8		1200	896	896	568	440	360	1368	992	712	536	304	344	168
G1 I Now 7 Operas	7					588	441	399			742	553	287		
H1	6					504	378	342			636	474	246		
D1, D2	5					640	475	345			730	555	340		
G3	4	1004	916	536	536				1004	644				244	100
H3	4	1004	916	536	536	380	276	240	1004	644	504	392	200	244	100
MA	7	2072	1890	1372	1372	896	665	483	2072	1449	1022	777	476	511	252
MB	5	1095	1000	715	715	570	425	320	1095	885	670	500	280	315	155
MG	4	876	800	572	572	456	340	256	876	708	536	400	224	252	124
MC	3	819	732	531	531	378	270	204	819	579	432	330	189	213	108

CREATE YOUR OWN (CYO PRICES SHOWN ARE PER SEAT)

You choose from 4-8 shows with the dates and seats of your choice and save up to 25% off individual show prices!

A* Operas I Highest demand	300	275	202	202	146	105	84	300	214	166	124	82	90	55
B* Operas	277	249	193	193	130	91	73	277	203	152	111	65	76	44
C* Operas I Best value	259	236	147	147	116	85	65	259	181	138	102	57	64	32

AN EVENING WITH PATTI LUPONE 10% OFF

An Evening with Patti LuPone is a one-night-only engagement. Specially discounted pricing below for subscribers may be used to add this event onto your series or include in a CYO package.

Patti LuPone: A Life in Notes			140	113	95	77	68		140	113	86	59	63	41
--------------------------------------	--	--	-----	-----	----	----	----	--	-----	-----	----	----	----	----

* See calendar for color A, B, C color coding by date.

Subscribers have access to an exclusive, season-long 10% discount on additional tickets.



Questions?

Visit lyricopera.org/subscribe or call **312.827.5600** for assistance.

Prices shown include discounts. Prices are subject to change. Subscriptions are not available in the blank areas.

Value Series subscribers may only exchange within the first three dates (excluding Sundays) of any 2024/25 opera production, otherwise upgrade fees will apply.

CYO seats will vary by event.

Aisle and adjacent seats incur an additional \$10 per ticket fee in Main Floor Select, Main Floor Prime, Main Floor 1 and 2, and First Balcony 1 and 2 seating, and a \$5 per ticket fee in all other sections of the house. Prices shown are for non-aisle and adjacent seats. Individual events within your subscription may have unique pricing.

Lyric reserves the right to sell up to eight seats per box for select performances.

Your philanthropic support, as well as your tenure as a subscriber, are taken into account when seats are assigned.






All subscription tickets will be sent via email for the 2024/25 Season. Box Office pickup will be available, beginning the week of September 9, 2024.

Casting and programs are subject to change but are specified in good faith.

2024 | 25 Season

Visit lyricopera.org/subscribe or call **312.827.5600** where our Audience Services staff is waiting to assist you — join us!

Sun	Mon	Tue	Wed	Thu	Fri	Sat
SEPTEMBER 2024						
8	9	10	11	12	13	14 7:30pm Rigoletto D, D1
15	16	17	18 2pm Rigoletto MB	19	20	21
22 2pm Rigoletto MA  	23	24	25 7pm Rigoletto G1	26 7pm Fidelio V, G, H1	27	28 7:30pm Rigoletto H, D2
29 2pm Fidelio MA  	30					
OCTOBER 2024						
		1 7pm Rigoletto V, G	2 2pm Fidelio MG	3	4 7pm Patti LuPone	5 7:30pm Fidelio D, D1
6 2pm Rigoletto MC	7	8	9	10 7pm Fidelio G1	11	12
NOVEMBER 2024						
3	4	5	6	7	8	9 7:30pm Figaro D, D2
10	11	12	13 7pm Figaro G, G1, G3	14	15	16 7:30pm Blue D, D1
17 2pm Figaro MA  	18	19 7pm Figaro V	20 7pm Blue H1, G3  	21 2pm Figaro MG	22 7pm Blue H, H3, D2	23
24 2pm Figaro MC	25	26 7pm Blue V, G, G1	27 2pm Figaro MB	28	29	30 7:30pm Figaro H, H1
DECEMBER 2024						
1 2pm Blue MA 	2	3	4	5	6	7
FEBRUARY 2025						
2	3	4	5	6	7	8 7:30pm Radvanovsky D, D1
9	10	11	12	13 7pm Radvanovsky V, H, H1, H3	14	15
16 2pm Radvanovsky MA	17	18	19	20	21	22

Sun	Mon	Tue	Wed	Thu	Fri	Sat
MARCH 2025						
9	10	11	12	13	14	15 7:30pm Bohème D, D1
16	17	18	19 2pm Bohème MB	20	21	22 7:30pm Bohème H3, D2
23	24	25 7pm Bohème G, G1	26	27	28 7pm Bohème H, H1	29
30 2pm Listeners MA 	31 7pm Bohème V					
APRIL 2025						
		1	2 7pm Listeners V, G3  	3 2pm Bohème MG	4	5 7:30pm Listeners D, D2
6 2pm Bohème MA  	7	8 7pm Listeners G, G1	9 7pm Bohème G3	10	11 7pm Listeners H, H1, H3	12 2pm Bohème MC
13	14	15	16 7pm Concert V, G, G1	17	18	19 2pm Concert MB

SEPTEMBER 2024

14	Sat	Rigoletto	D, D1	7:30pm
18	Wed	Rigoletto	MB	2pm
22	Sun	Rigoletto	MA	2pm
25	Wed	Rigoletto	G1	7pm
26	Thu	Fidelio	V, G, H1	7pm
28	Sat	Rigoletto	H, D2	7:30pm
29	Sun	Fidelio	MA	2pm

OCTOBER 2024

1	Tue	Rigoletto	V, G	7pm
2	Wed	Fidelio	MG	2pm
4	Fri	Patti LuPone		7pm
5	Sat	Fidelio	D, D1	7:30pm
6	Sun	Rigoletto	MC	2pm
10	Thu	Fidelio	G1	7pm

NOVEMBER 2024

9	Sat	Figaro	D, D2	7:30pm
13	Wed	Figaro	G, G1, G3	7pm
16	Sat	Blue	D, D1	7:30pm
17	Sun	Figaro	MA	2pm
19	Tue	Figaro	V	7pm
20	Wed	Blue	H1, G3	7pm
21	Thu	Figaro	MG	2pm
22	Fri	Blue	H, H3, D2	7pm
24	Sun	Figaro	MC	2pm
26	Tue	Blue	V, G, G1	7pm
27	Wed	Figaro	MB	2pm
30	Sat	Figaro	H, H1	7:30pm

DECEMBER 2024

1	Sun	Blue	MA	2pm
---	-----	------	----	-----

FEBRUARY 2025

8	Sat	Radvanovsky	D, D1	7:30pm
13	Thu	Radvanovsky	V, H, H1, H3	7pm
16	Sun	Radvanovsky	MA	2pm


MARCH 2025

15	Sat	Bohème	D, D1	7:30pm
19	Wed	Bohème	MB	2pm
22	Sat	Bohème	H3, D2	7:30pm
25	Tue	Bohème	G, G1	7pm
28	Fri	Bohème	H, H1	7pm
30	Sun	Listeners	MA	2pm
31	Mon	Bohème	V	7pm

APRIL 2025

2	Wed	Listeners	V, G3	7pm
3	Thu	Bohème	MG	2pm
5	Sat	Listeners	D, D2	7:30pm
6	Sun	Bohème	MA	2pm
8	Tue	Listeners	G, G1	7pm
9	Wed	Bohème	G3	7pm
11	Fri	Listeners	H, H1, H3	7pm
12	Sat	Bohème	MC	2pm
16	Wed	Concert	V, G, G1	7pm
19	Sat	Concert	MB	2pm

Lyric’s 2024/25 Season is generously sponsored by

Erika Gross in loving memory of Dietrich Gross, Julie & Roger Baskes, and Invesco 

PRICE COLOR KEY

Color key only applicable to CYO and Add On individual tickets.

Create your own series price dates



Other / special events



ACCESSIBLE PROGRAMS KEY

For more information on accessibility services, visit lyricopera.org/accessibility.

Audio-described performances 

SoundShirt performances 

ASL interpreted performances 

Be moved by a season of
beautiful music, powerful theater,
and **dazzling star performances.**

SUBSCRIBE TODAY TO THE 2024 | 25 SEASON

📞 312.827.5600
🏠 lyricopera.org

**LYRIC OPERA
OF CHICAGO**
20 N Wacker Drive
Suite 800
Chicago, IL 60606

Lyric
OPERA OF
CHICAGO

Non-profit org
U.S. Postage
PAID
Chicago, IL
Permit No. 6047



A new-to-Chicago Fiddler, Cory Wewer, San Francisco Opera
Lyric's 2024/25 Season is sponsored by **Erika Gross** in loving memory of **Dietrich Gross**, **Julie & Roger Baskies**, and **Invesco SEC**.
Lyric Opera of Chicago thanks its Official Airline, **American Airlines**, and acknowledges support from the **Illinois Arts Council**.